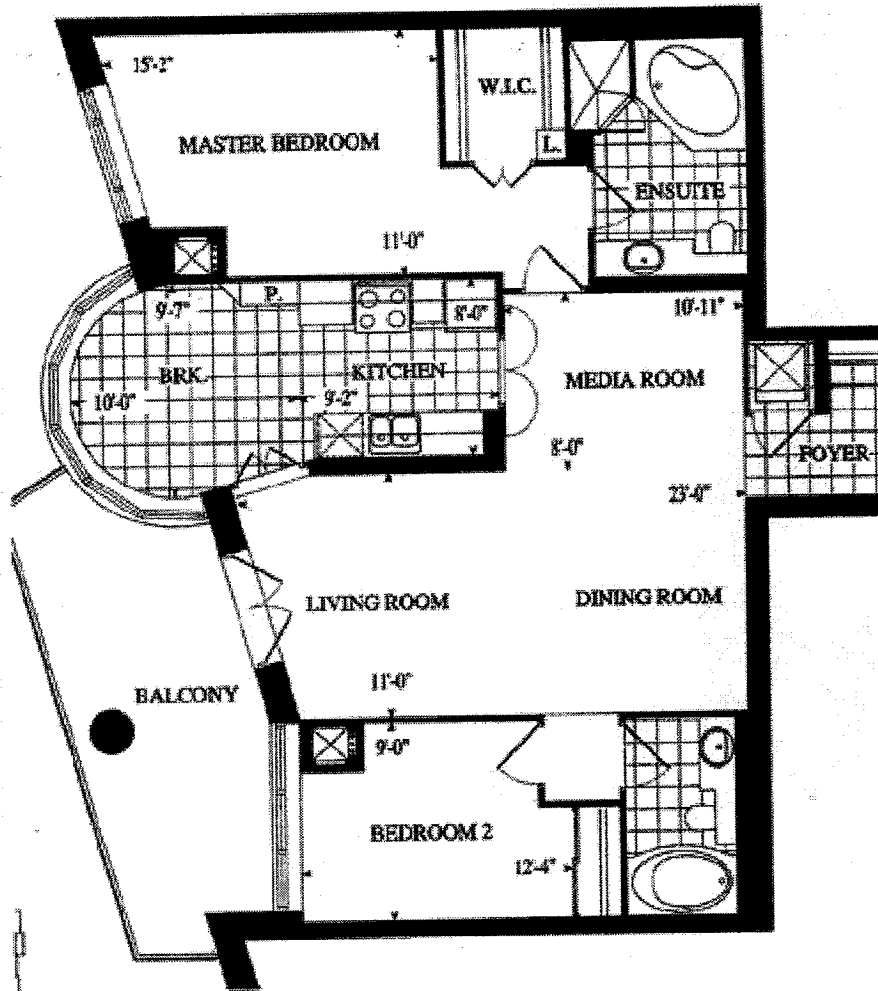
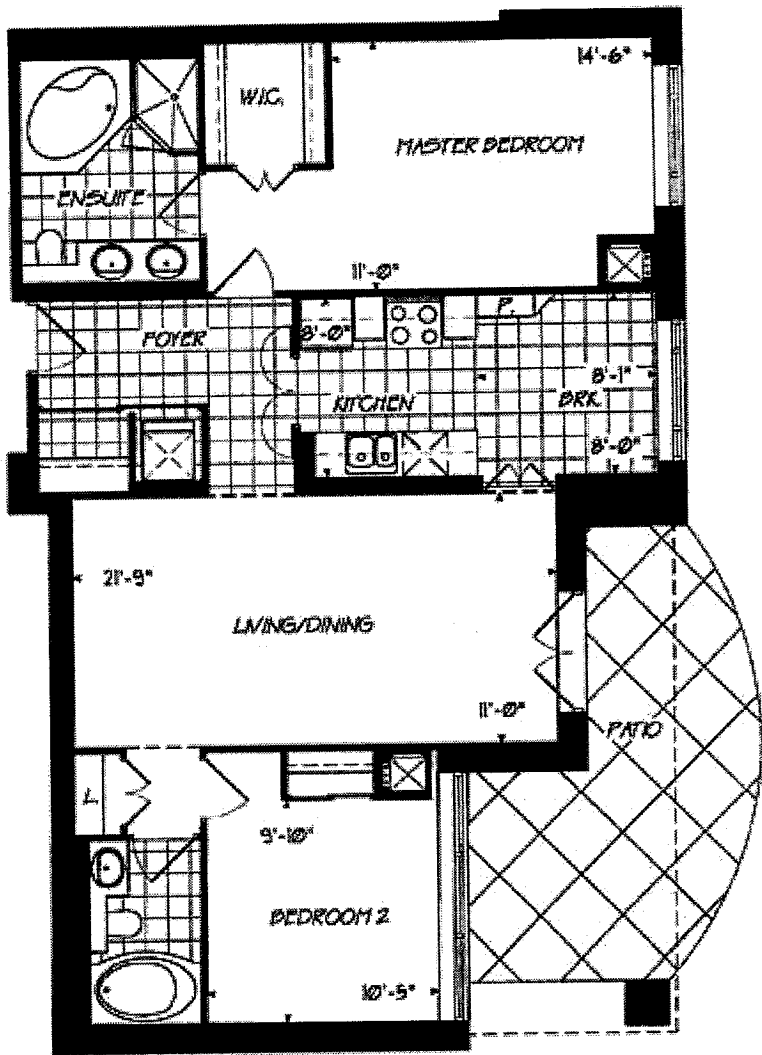
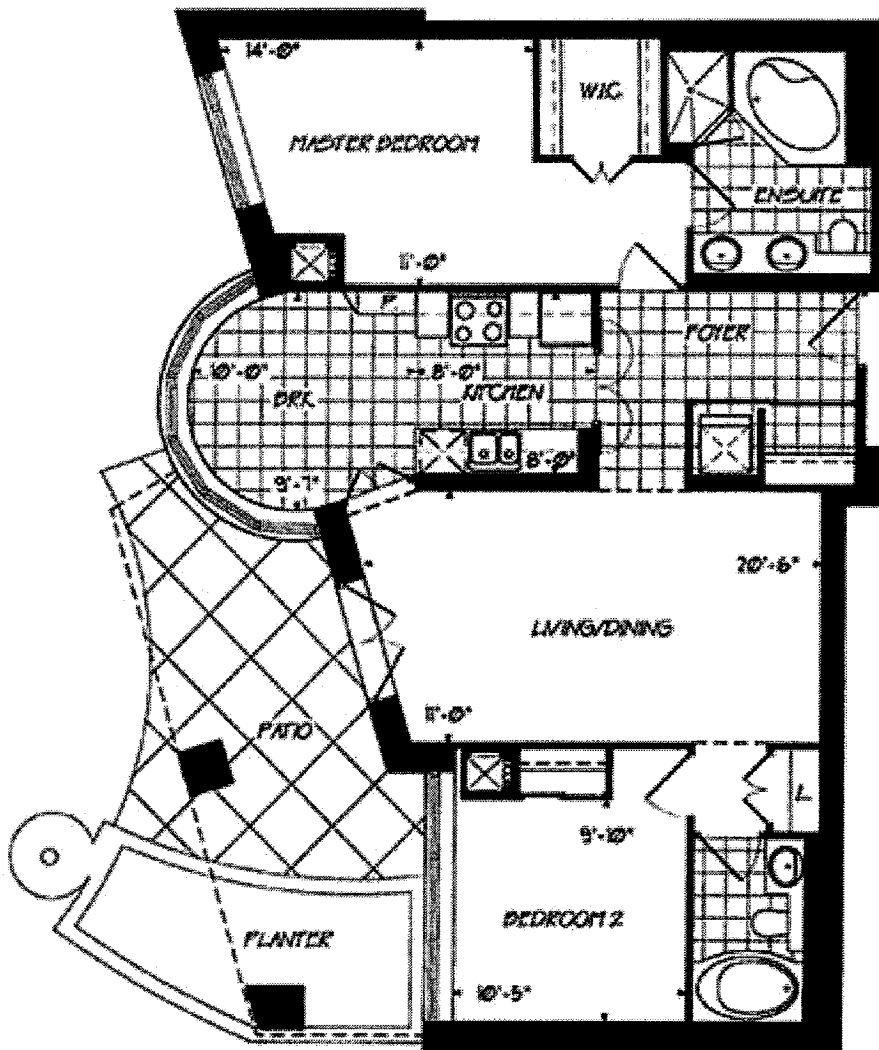


# Sample of Floor Plans 9 & 35 Boardwalk Drive



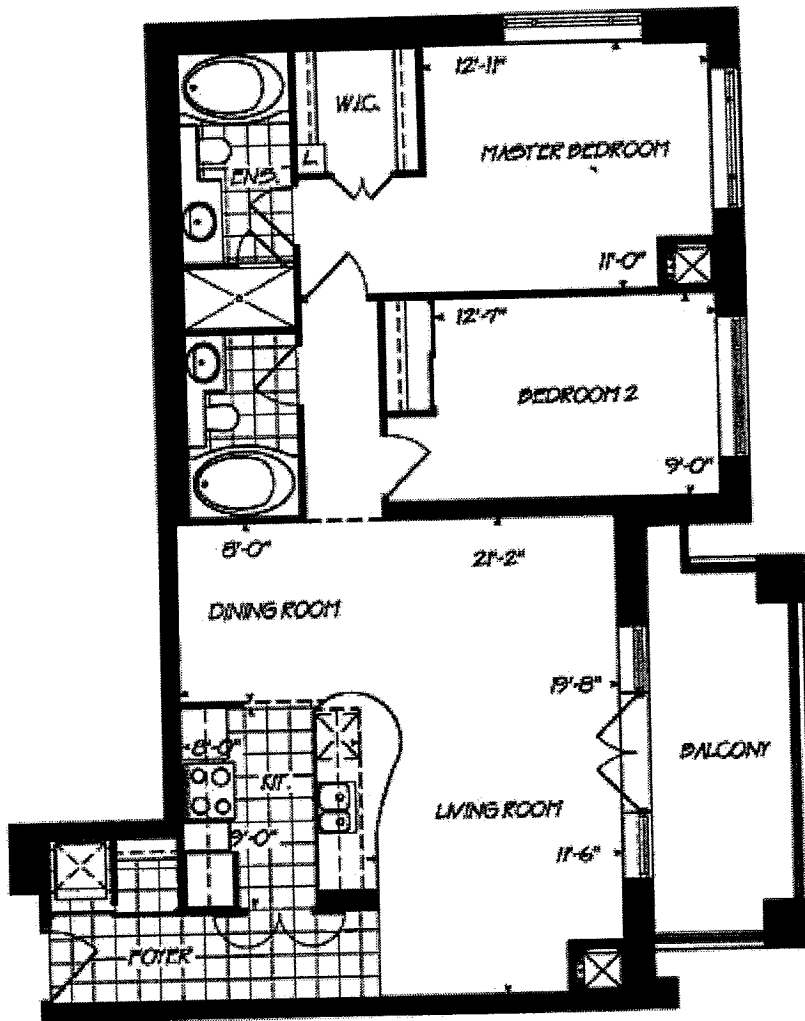


**THE WELLINGTON**  
1154 sq. ft.



# THE DOVER

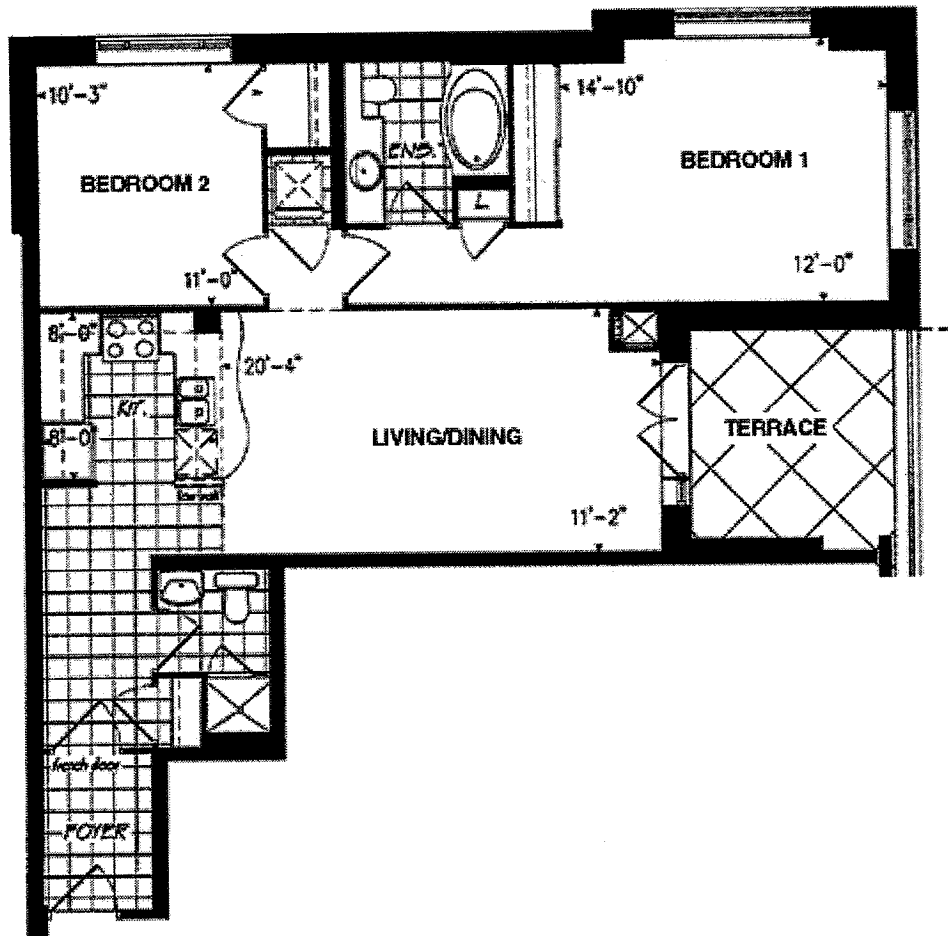
1133 sq. ft.



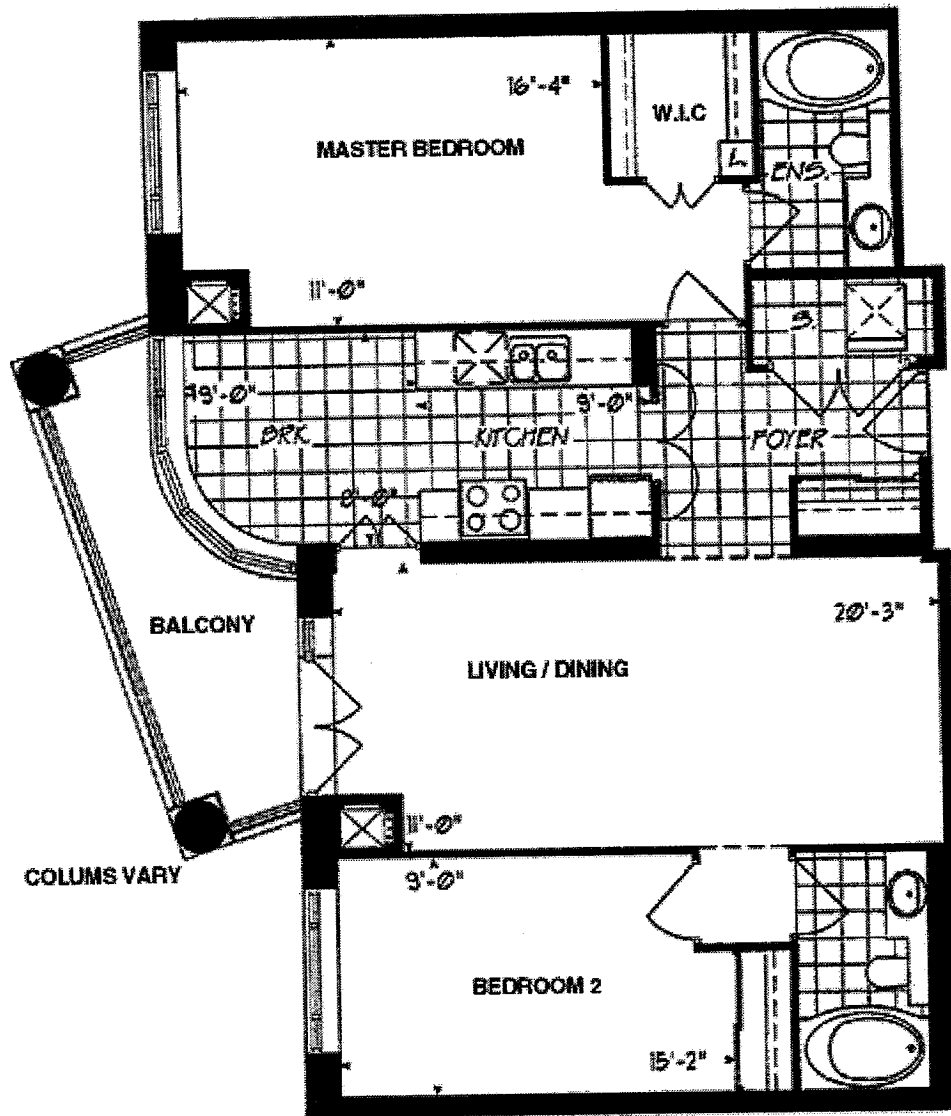
## ***THE BRIDGEPORT***

1105 sq. ft.

# The Brisbane 2B - R - 1035 ft<sup>2</sup>



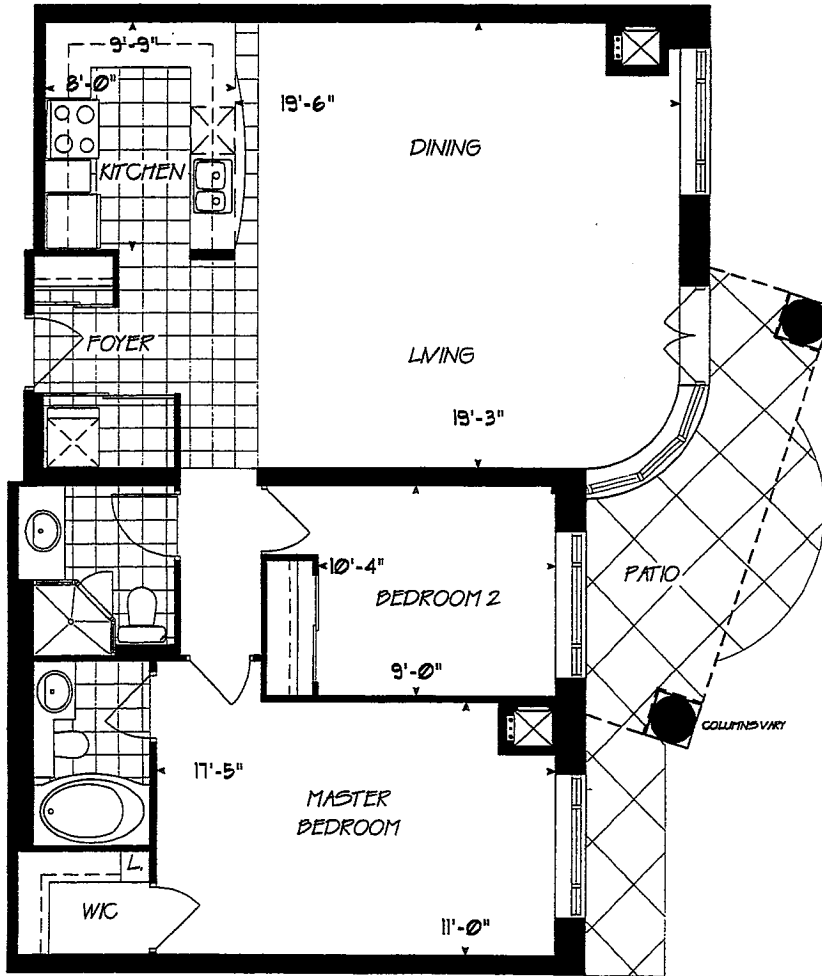
# The Brighton Option 1 - R - 1135 ft



# THE BOARDWALK

GROUND FLOOR

SCHEDULE A



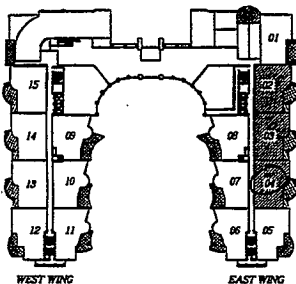
## THE BRIGHTON OPTION 3

1135 ft<sup>2</sup>

EAST WING

Municipal \* 02, 03, 04

Legal \* 02, 03, 04



GROUND FLOOR PLAN

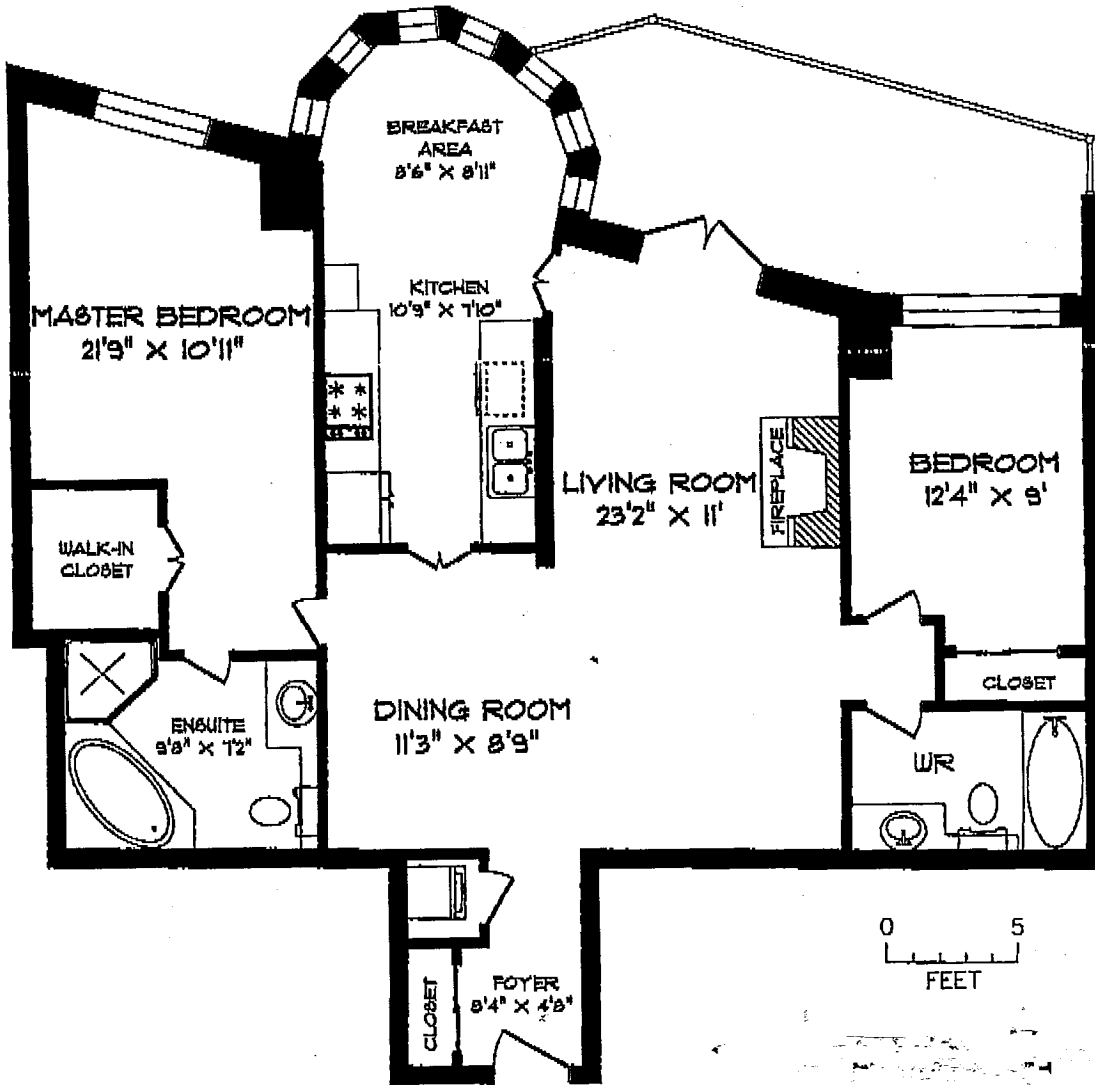
Purchase Acknowledgement Date

Municipal No. 104

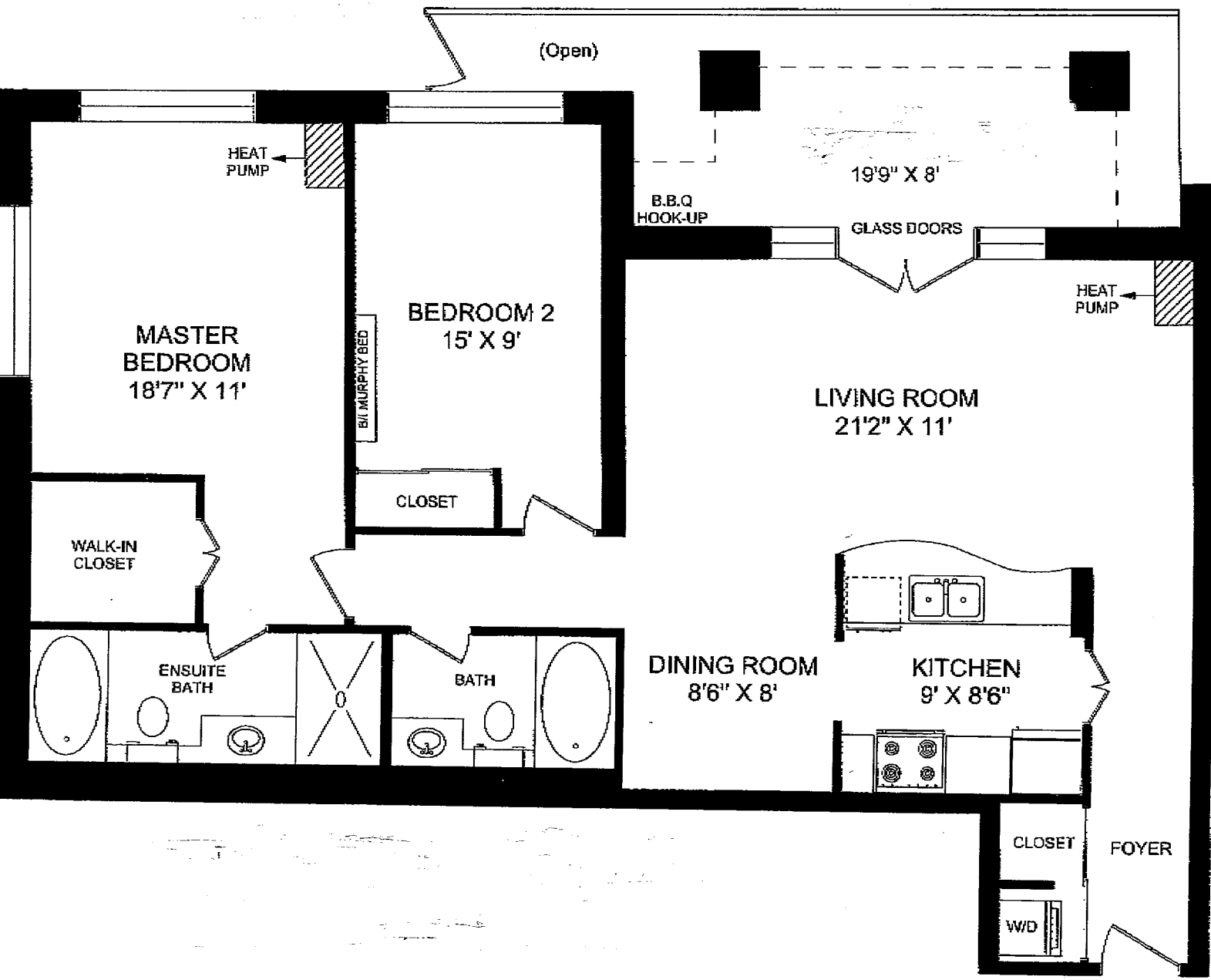
Level I Unit No. 04

Dimensions, specifications, layouts and materials are approximate only and are subject to change without notice. E. & E.C. Tile patterns may vary.

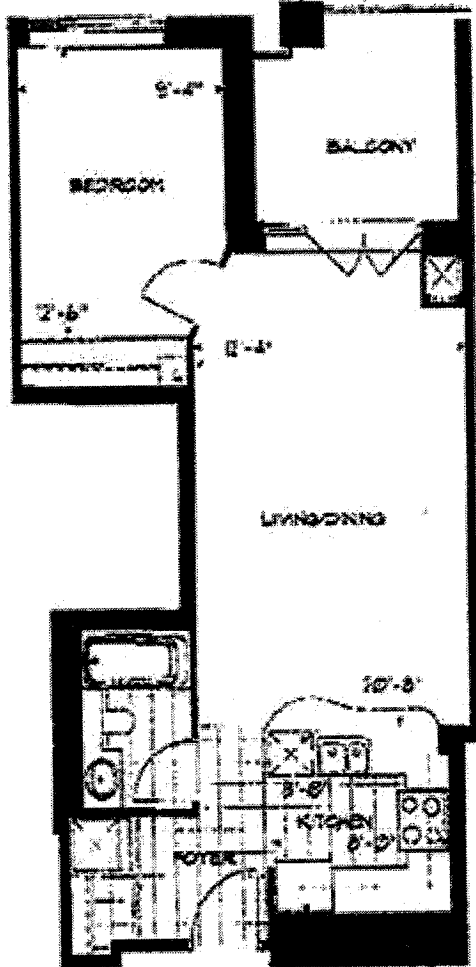
# 35 BOARDWALK DR



JANU  
416



SECOND FLOOR CONDITION  
(COLUMN VARIES AT 3RD FLOOR)



**THE BRADFORD**

**1C**

645 sq. ft.